



# NEWSLETTER

Term 4 No 19

Thurs Nov 14<sup>th</sup> 2013

[www.millelps.sa.edu.au](http://www.millelps.sa.edu.au)

Principal – Stephen Jolley  
Chairperson – Tim Scanlon

## PLEASE FIND THE FOLLOWING INSERTS WITH THIS NEWSLETTER

- Student Profiles
- Middle Primary insert
- Parent Club Minutes
- Parent Volunteers Morning Tea reply slip

Dear Parents,

On Monday our school held a Remembrance Day Ceremony which was lead by our Upper Primary students. They spoke to the rest of the school about the history of Remembrance Day and also read In Flanders Fields and The Ode. Our ceremony complemented the work done in class to teach our students the significance of this day and students are to be commended on their respectful behaviour during this ceremony.



Teachers working in teams is acknowledged as an important strategy in building teacher quality and improving student learning outcomes. Earlier this week our staff participated in the culmination of a project that they have been working on this year with staff from 4 other 'small schools' in our area. Since Term 1, teacher teams have worked on an aspect of student learning in Literacy or Numeracy and this week, each team presented their work to all staff from the participating schools. The quality of presentations and work undertaken by our teachers was very impressive and has contributed toward improving the learning outcomes of our students.

We are looking forward to the Christmas Pageant on the weekend. We have approximately 50 students participating and information regarding final arrangements has been included in this week's newsletter. We look forward to our students having a great time at the parade.

Regards,

*Stephen*



*Respect - Participation - Success*

## DATES TO REMEMBER

### November

Saturday 16<sup>th</sup>  
Tuesday 19<sup>th</sup>

Wednesday 20<sup>th</sup>

Thursday 21<sup>st</sup>

Friday 22<sup>nd</sup>

Tuesday 26<sup>th</sup>

### December

Sunday 1<sup>st</sup>

Mount Gambier Christmas Parade.

Heat Ups Roster – Amanda Munn.

Assembly, 3:00pm.

Whole School Buddy Activity.

Parent Club AGM, 9:00am.

Issue 8 Book Club closing date.

Heat Ups Roster – Lucy Innes & Cindy Cox.

Blue Lake Fun Run.

## PARENT VOLUNTEERS MORNING TEA

Once again this year we have had a terrific amount of parent support for school activities and events. To thank you for your efforts we would like to provide a morning tea on Wednesday 11<sup>th</sup> December at 10:30am. Please complete the reply slip if you are able to make it.

## 2013 NAPLAN

Each year staff analyse the NAPLAN results for our school. This information helps set priorities for our school as well as providing information regarding individual student progress. This year, our overall results were either close to or above the National Average for all year levels and across all areas tested. Reading, Spelling, Grammar and Punctuation and Writing were strengths. Another aspect of NAPLAN that is a key priority for our school is the progress of students each time they sit this assessment (eg. the growth in learning from yr 3 to yr 5 to yr 7). It was pleasing to observe that we had a high percentage of students make positive growth in their achievement in both Literacy and Numeracy.

## AFTER SCHOOL SUPERVISION

Students have been reminded that if they are waiting to get picked up then they are required to stay around the court/verandah area. After school dismissal is a busy time and the yard duty teacher supervises students up until the bus arrives at approximately 3.45pm. Children are welcome to be on the playground and oval area after school provided that there is parent supervision. School sports equipment should not be taken out at the end of the day.

A reminder also that at home time we have many cars located around the Sherwin Rd area. Please remember to park so that there is sufficient space between cars but also, if parking across the road, be mindful of leaving enough space so that cars can reverse out safely. Thank you for your cooperation with this.

## ASSEMBLY

Our next assembly is Tuesday November 19<sup>th</sup> commencing at approximately 3:00pm. If the weather is suitable, we will have it under the shelter area. All families are welcome to attend.

## SCHOOL CONCERT

Our end of year school concert will be held on Thursday December 12<sup>th</sup> at 7pm at the Mil Leil Hall. During the evening each class presents an item and it also provides an opportunity to farewell our Year 7 students. All families are encouraged to join us. No seating tickets need to be purchased prior to the concert however a gold coin donation is requested on the night.

## LE JOUR DE FRANCAIS

### FRENCH ACTIVITIES AFTERNOON

Next Wednesday 20<sup>th</sup> November students will be participating in a French themed afternoon from 2:35 - 3:30pm. Many activities are planned and students are encouraged to wear French colours. Parents and friends are welcome to come along and join the fun.

*Respect - Participation - Success*

## PARENT CLUB NEWS

**Next meeting & AGM:** Thursday 21<sup>st</sup> November at 9:00am in the Library, with AGM to follow. Hostess: Sandie Oehms.

### School Uniform

There are a limited number of jumpers, vests and jackets as per the School Clothing Order Form for sale from the school, particularly smaller sizes. Prices are as listed on the order form.

### Christmas Dinner Reminder

Parent Club Christmas Dinner will be held at Commodore on the Park on Monday 2<sup>nd</sup> December at 6.30pm. All are welcome and we ask those attending to bring a Kris Kringle gift to the value of \$5. Please RSVP to the Front Office before Friday 29<sup>th</sup> November.

### Concert

Volunteers will be required to help decorate the hall for our Christmas Concert on Thursday morning 12<sup>th</sup> December at 9am, and again tidy the hall on Friday morning 13<sup>th</sup> December at 9am.

Also, please advise the school of the number of preschoolers who will be attending the concert.

### Christmas Raffle

We are looking for donations for the Christmas raffle to be drawn at the end of year concert. We hope to make several large hampers as in previous years. Please drop your non perishable donation in the basket at the front office. If you know of any businesses that would like to make a donation of a prize please let Deb Burn know.

## COMMUNITY NOTICES

You will find further information regarding the following on our Notice Board or by phone contact numbers or visiting websites provided.

### SCHOOL DENTAL SERVICE



Government of South Australia  
SA Health

#### DENTAL CARE FOR YOUR CHILDREN

It is important for children to have strong, healthy teeth and gums. All children (0 - 17 years) are welcome to attend **School Dental Service** clinics.

Dental treatment is free at **School Dental Service** clinics if:

- Family Tax Benefit Part A is paid for your child, or
- Your child is covered by a School Card, Health Care Card or Pensioner Concession Card.

The **School Dental Service** will bulk-bill under the new Medicare *Child Dental Benefits Schedule* that starts in 2014. Under this scheme, most children aged between 2-17 years will be eligible to claim up to \$1000 of Dental services over 2 years.

**Please bring your Medicare Card to all appointments. If your child is covered by a School Card, Health Care Card or Pensioner Concession Card please bring this to all appointments as well.**

If your child already attends a SA Dental Service clinic, contact us when their next appointment is due. If your child does not already attend one of our clinics, please phone us to make an appointment in 2014. For more information contact your local clinic. Clinic list found at [www.sadental.sa.gov.au](http://www.sadental.sa.gov.au)

Please note that our clinic's last day will be Tuesday 24<sup>th</sup> December 2013 and we will re-open on Thursday 22<sup>nd</sup> January 2014.

### GIRLS GOLF CLUB

Golf South East are bringing together girls 8-17 years interested in joining the NEW Girls Golf Club. Mount Gambier GC 17<sup>th</sup> November 2013 and 12<sup>th</sup> January 2014. Register/Inquiries to Mary Winsler, Golf SE 0438 057 435, [mwinsler@bigpond.com](mailto:mwinsler@bigpond.com) or [www.golfse.com.au](http://www.golfse.com.au)

### THEATRE BUGS – MOUNT GAMBIER HOLIDAY PROGRAM

Leaflets enclosed with this Newsletter.

### "MUMS ON A MISSION" SHOPPING SPREE

**Tuesday 3<sup>rd</sup> December 2013 - \$15/ticket (includes 5 raffle tickets)**

Support local businesses and help raise money for cancer research.

Contact Lisa Kirby for details and tickets 0438 868 326.

*Respect - Participation - Success*

## MT GAMBIER CHRISTMAS PARADE REMINDERS

Please read the information below regarding the arrangements for this week's parade and return the Student Medical Information sheet tomorrow Friday 15<sup>th</sup> November.

### Supervision

Our teaching staff will be providing supervision for our students. If you need to contact the staff on the day please do so via Mr Savage: 0400 984 598.

### Meeting Point

Our float, 'The Old Woman That Lived In A Shoe', is float number 8. We ask that all students assemble by 10.40am. Our float will be located in a position between the Federal Hotel and Carlin and Gazzard.

### Starting Time

The pageant will officially start at 11am.

### Finishing Time and Pick Up of Students

We anticipate being finished by 11.45am. At the end of the parade all floats will be directed into Vansittart Park and a collection point for students has been allocated on the oval. Please ensure that you have made arrangements to pick up your child at this time and that your child is checked off by their supervising teacher before leaving.

### Costumes and Float Organisation

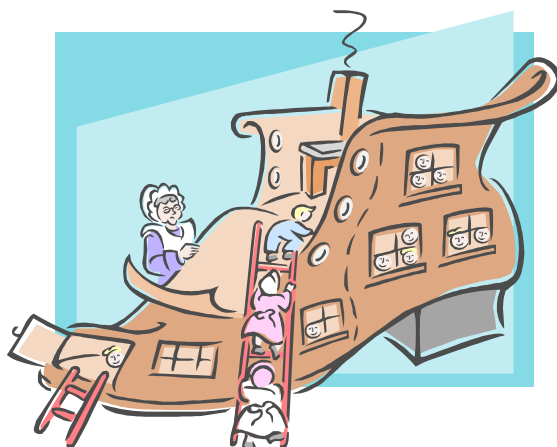
Reception students will be seated on the 'float' for the duration of the parade with our remaining students walking alongside.

### Official Information from the Organisers for Parents

"By entering in the Parade you agree to the City of Mount Gambier and WIN Television taking photographs and video footage of your entry, including individuals involved. You further acknowledge that the City of Mount Gambier and WIN Television have the authority to publish and use this material for subsequent advertising and marketing purposes."

If you have any queries regarding the Parade please speak to your child's class teacher.

### Mil Lel PS Staff.



*Respect - Participation - Success*